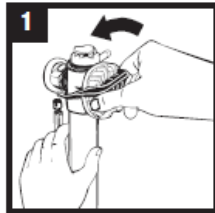
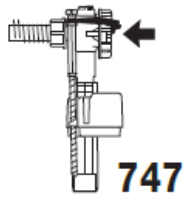
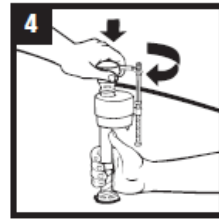
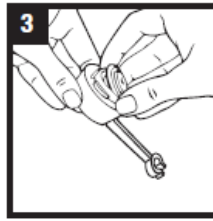
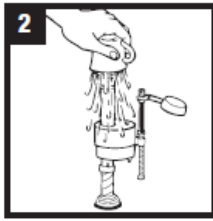
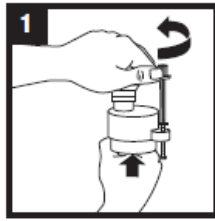
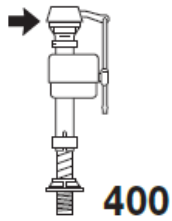


INSTALL WITH CONFIDENCE • INSTÁLE CON CONFIANZA

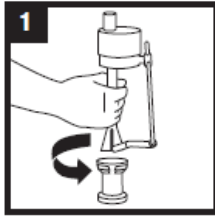
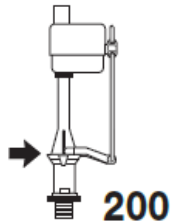


1. Turn off water supply. Flush toilet. Twist to remove cap. Remove seal.

2. Hold cup over opening, slowly turn on water to clear debris. Turn off water.

3. Gently push nipple onto stem in cap. DO NOT BEND stem.

4. Twist cap back into place. Turn on water.



NOTE: Replace fill valve if a) older than 5 years, b) do not know age, c) If In-tank bowl cleaners have been used. Use of such cleaners will: 1) RESULT IN DAMAGE to tank parts, 2) MAY CAUSE FLOODING and PROPERTY DAMAGE, 3) VOID FLUIDMASTER WARRANTY. Use only genuine

Fluidmaster replacement parts. Use of non-Fluidmaster parts will void the warranty on the Fluidmaster Valve.